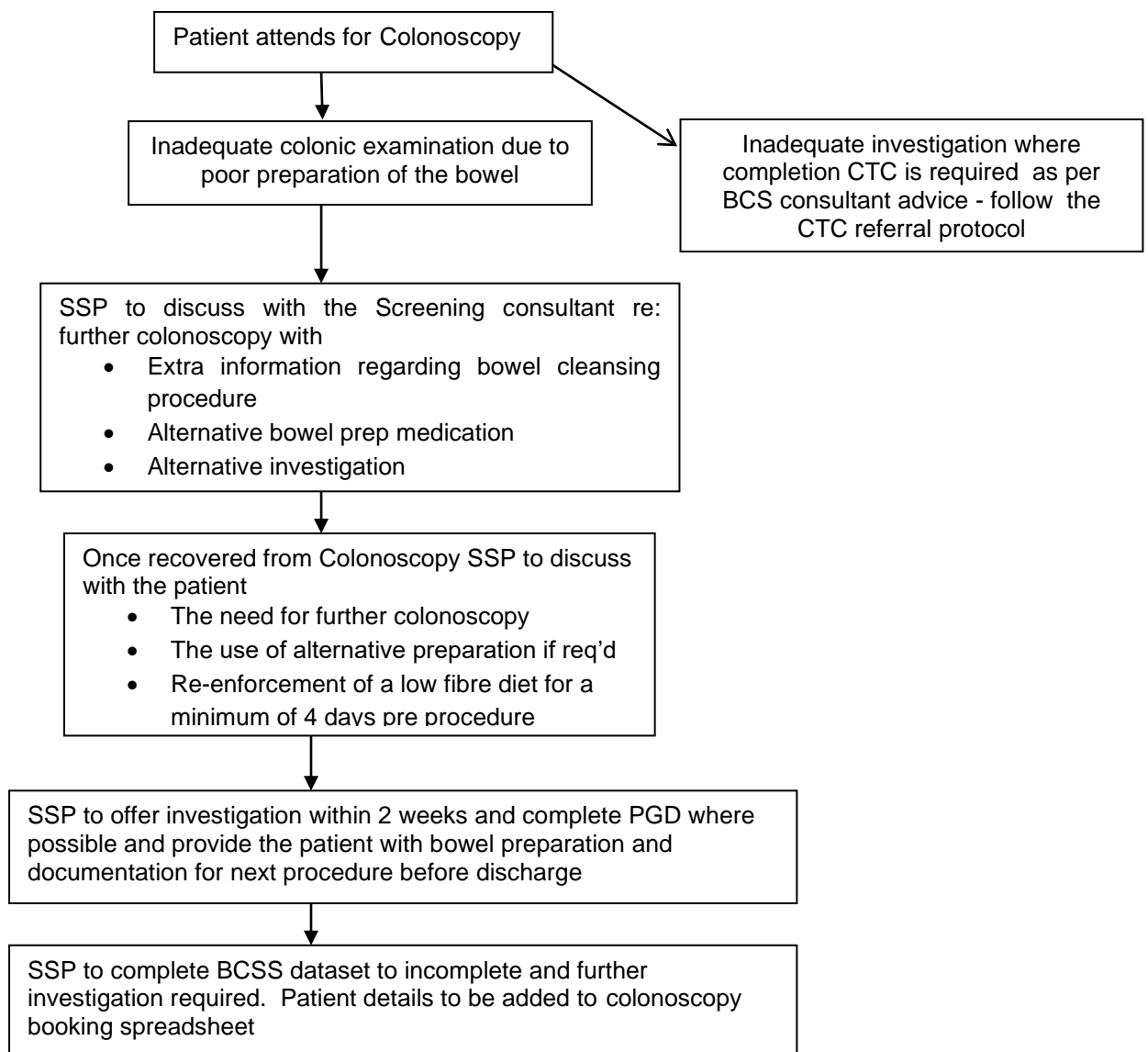


Please note the local reference for this work instruction is WISSP2.2

1. Introduction and Who Guideline applies to

A failed investigation can be due to many reasons but the Screening practitioner will need to discuss with the Screening Consultant a way forward to provide complete visualisation of the large colon. This work instruction has been developed to assist the SSP should there be an inadequate lower GI procedure.

2. Guideline Standards and Procedures



3. Education and Training

Annual DOPS assessment. All screening staff made aware of SOPS and Work Instructions on induction and any changes/reviews are fed back to the team via email and at team meetings

4. Monitoring Compliance

| What will be measured to monitor compliance | How will compliance be monitored | Monitoring Lead | Frequency | Reporting arrangements |
|--|---|------------------------|------------------|-------------------------------|
| Failed colonoscopy | Audit | A Bonner | Annual | BCS audit meeting |
| Conversion to CTC | Audit | A Bonner | Annual | BCS audit meeting |
| | | | | |

5. Supporting References (maximum of 3)

Bowel Cancer screening Service Specification No26

6. Key Words

Failed, colonoscopy

| CONTACT AND REVIEW DETAILS | |
|---|---|
| Guideline Lead Claire Almen and Amanda Smith, Lead Specialist Screening Practitioners, UHL Bowel Cancer Screening | Executive Lead Alex Bonner UHL Bowel Cancer Screening Manager |
| Details of Changes made during review: General update on process from local work instruction to Trust format | |