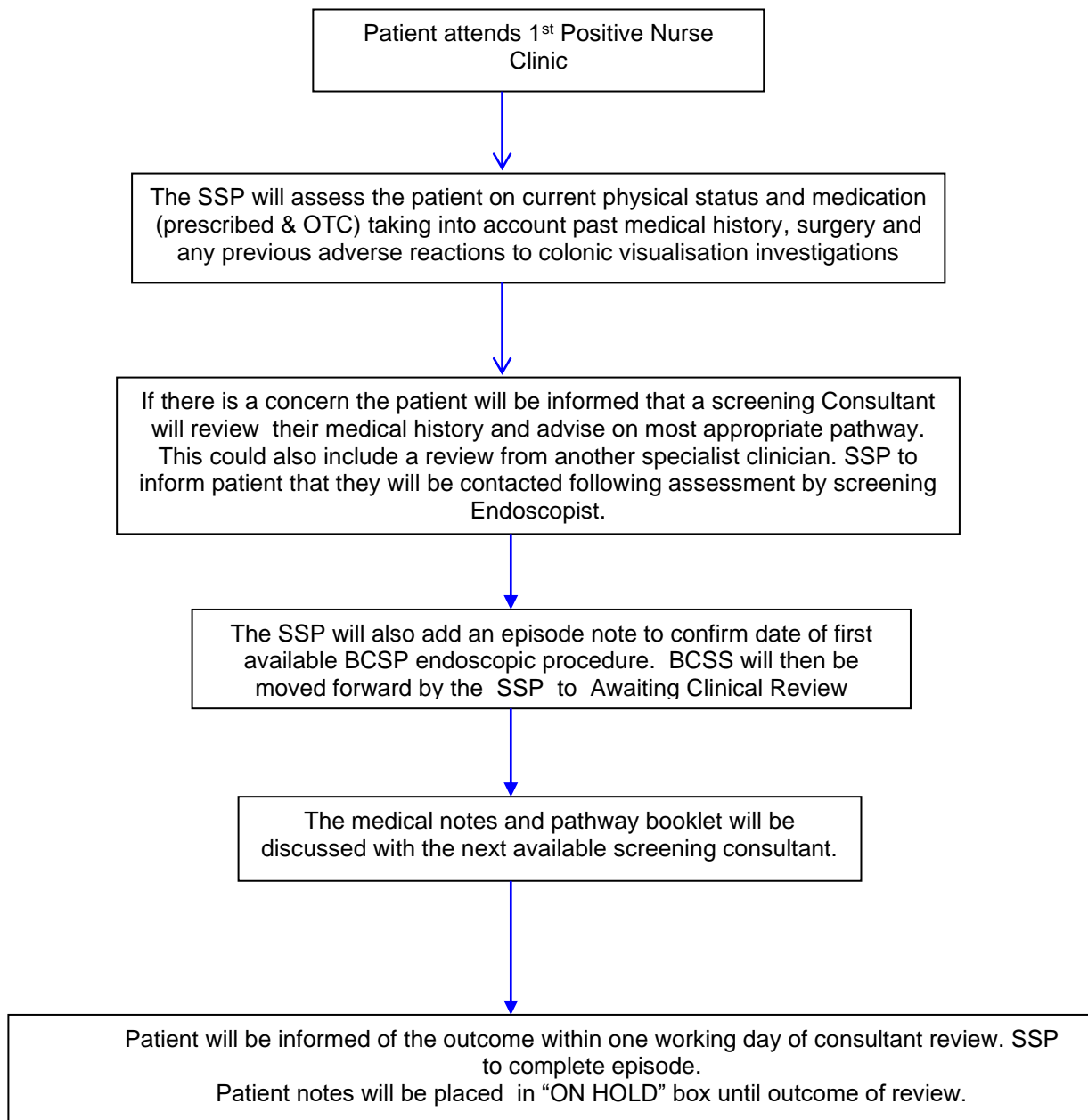


Please note the local reference for this work instruction is WISSP1.1

1. Introduction and Who Guideline applies to

This work instruction is to confirm the process and role of the Specialist screening practitioner (SSP) involved in the Bowel Cancer Screening (BCS) outcome of 1st positive appointment clinic (PA-C) when suitability requires further consideration from a Screening Consultant.

2. Guideline Standards and Procedures



3. Education and Training

Annual DOPS assessment. All screening staff made aware of SOPS and Work Instructions on induction and any changes/reviews are fed back to the team via email and at team meetings

4. Monitoring Compliance

What will be measured to monitor compliance	How will compliance be monitored	Monitoring Lead	Frequency	Reporting arrangements
CTC rate as 1 st test	Audit	A Bonner	Annual	BCS Annual audit meeting
Decline investigation	Audit	A Bonner	Annual	BCS Annual audit meeting
Cancer waiting times	PTL	K Steel	Weekly	CAB

5. Supporting References (maximum of 3)

Bowel Cancer screening Service Specification No26

6. Key Words

Bowel Cancer screening, Suitability

CONTACT AND REVIEW DETAILS	
Guideline Lead Claire Almen and Amanda Smith, Lead Specialist Screening Practitioners, UHL Bowel Cancer Screening	Executive Lead Alex Bonner UHL Bowel Cancer Screening Manager
Details of Changes made during review: General update on process from local work instruction to Trust format	