

## LRI Children's Hospital

### Emergency Inpatient and Outpatient Paediatric Metabolic Disorders Pathways

Staff relevant to:	All medical staff working within UHL Children's services
Team approval date:	August 2021
Version:	1
Revision due:	February 2023
Written by:	S Bandi
Trust Ref:	C44/2021

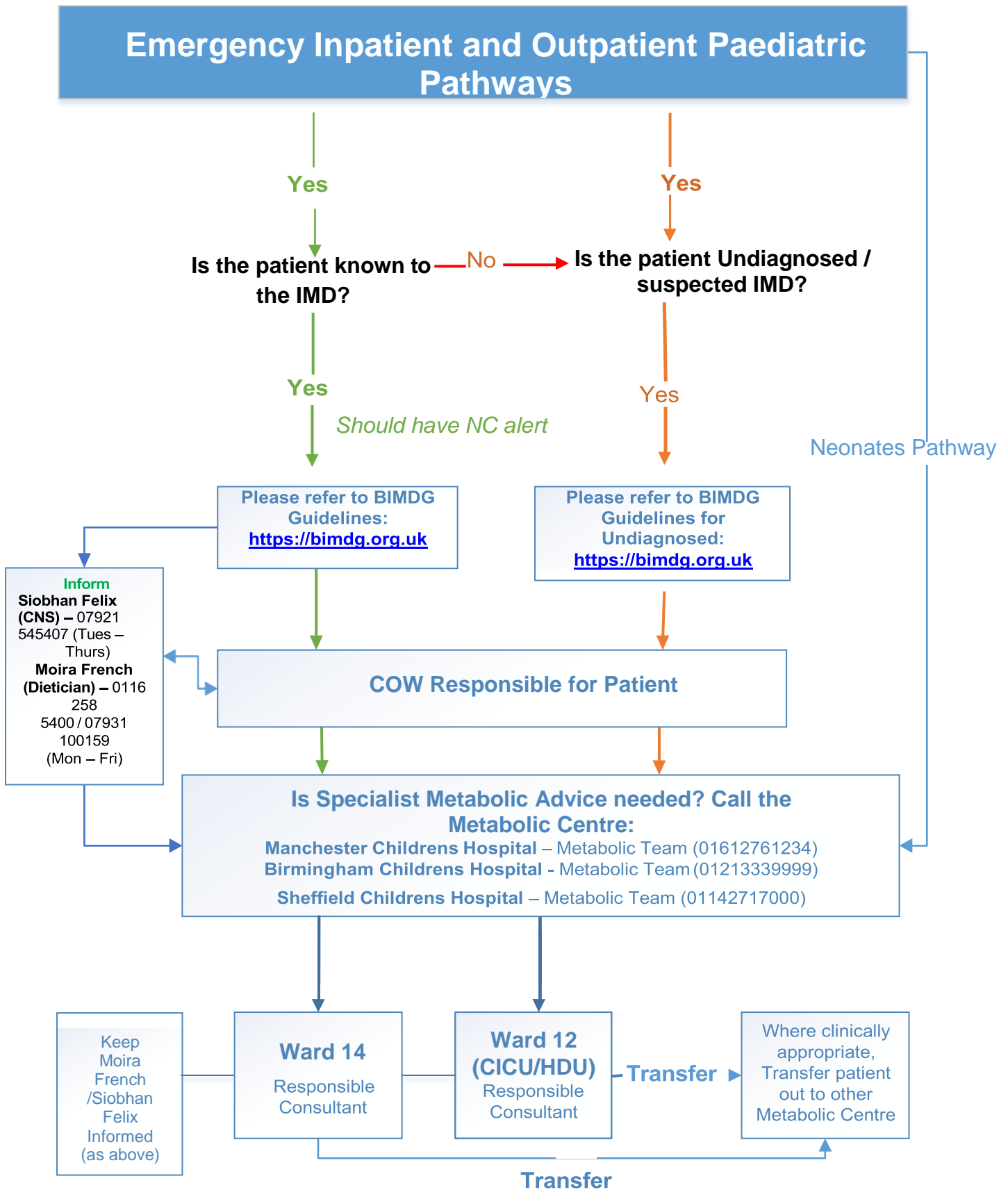
#### 1. Introduction and Who Guideline applies to

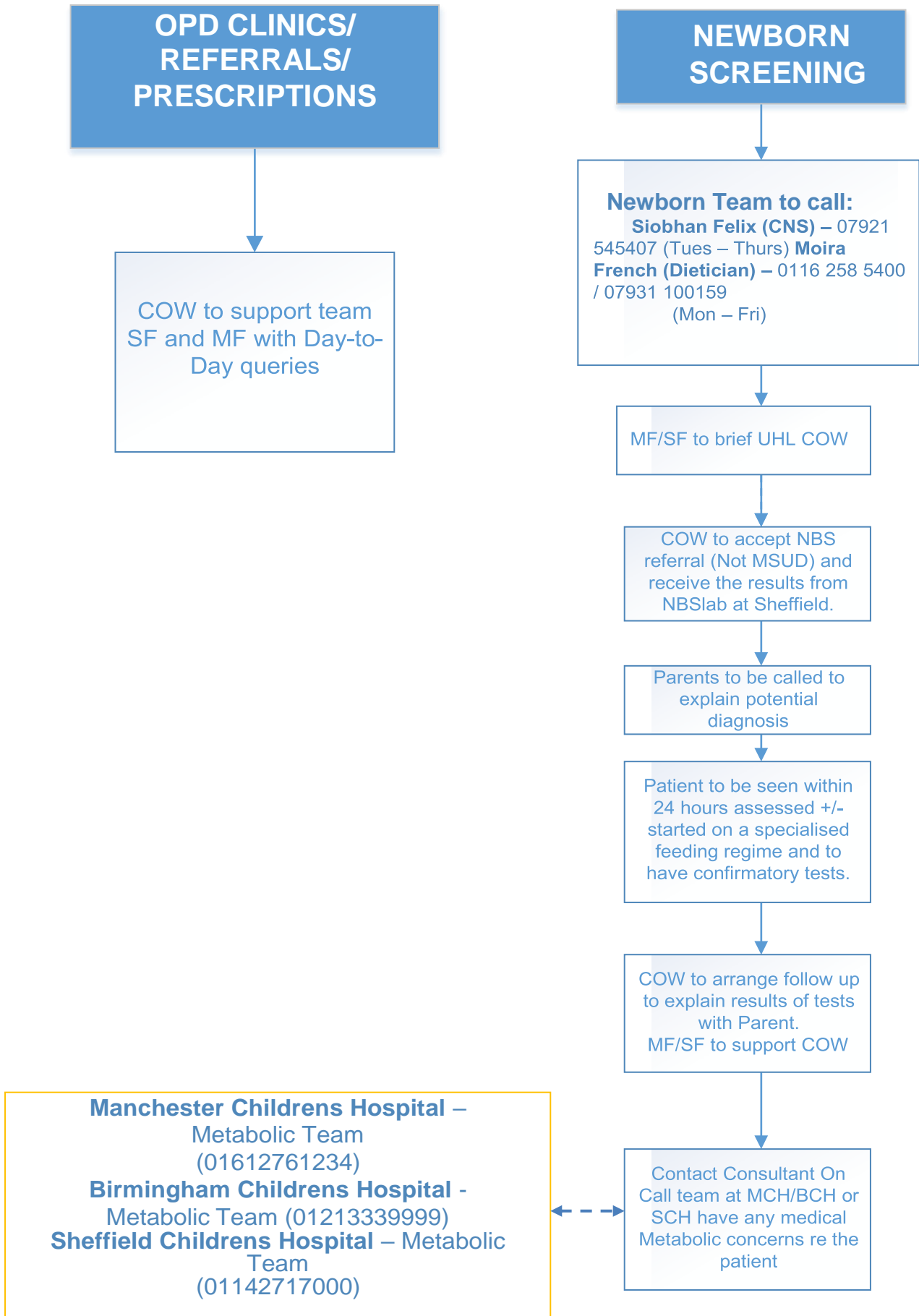
This pathway has been developed to support admission/transfer pathways of emergency paediatric patients presenting at UHL with suspected or confirmed Inherited Metabolic Disorders (IMD)

#### Related documents:

- [Metabolic Conditions UHL Childrens Medical Guideline](#)

# Paediatric Metabolic Disorders UHL Pathways





### **3. Education and Training**

None

### **4. Supporting References**

NONE

### **5. Key Words**

#### **Inherited Metabolic Disorders, Newborn, Screening**

---

The Trust recognises the diversity of the local community it serves. Our aim therefore is to provide a safe environment free from discrimination and treat all individuals fairly with dignity and appropriately according to their needs. As part of its development, this policy and its impact on equality have been reviewed and no detriment was identified.

<b>CONTACT AND REVIEW DETAILS</b>	
<b>Guideline Lead (Name and Title)</b> S Bandi – Consultant - HoS	<b>Executive Lead</b> Chief Nurse
<b>Details of Changes made during review:</b> New pathway	