

1. Introduction

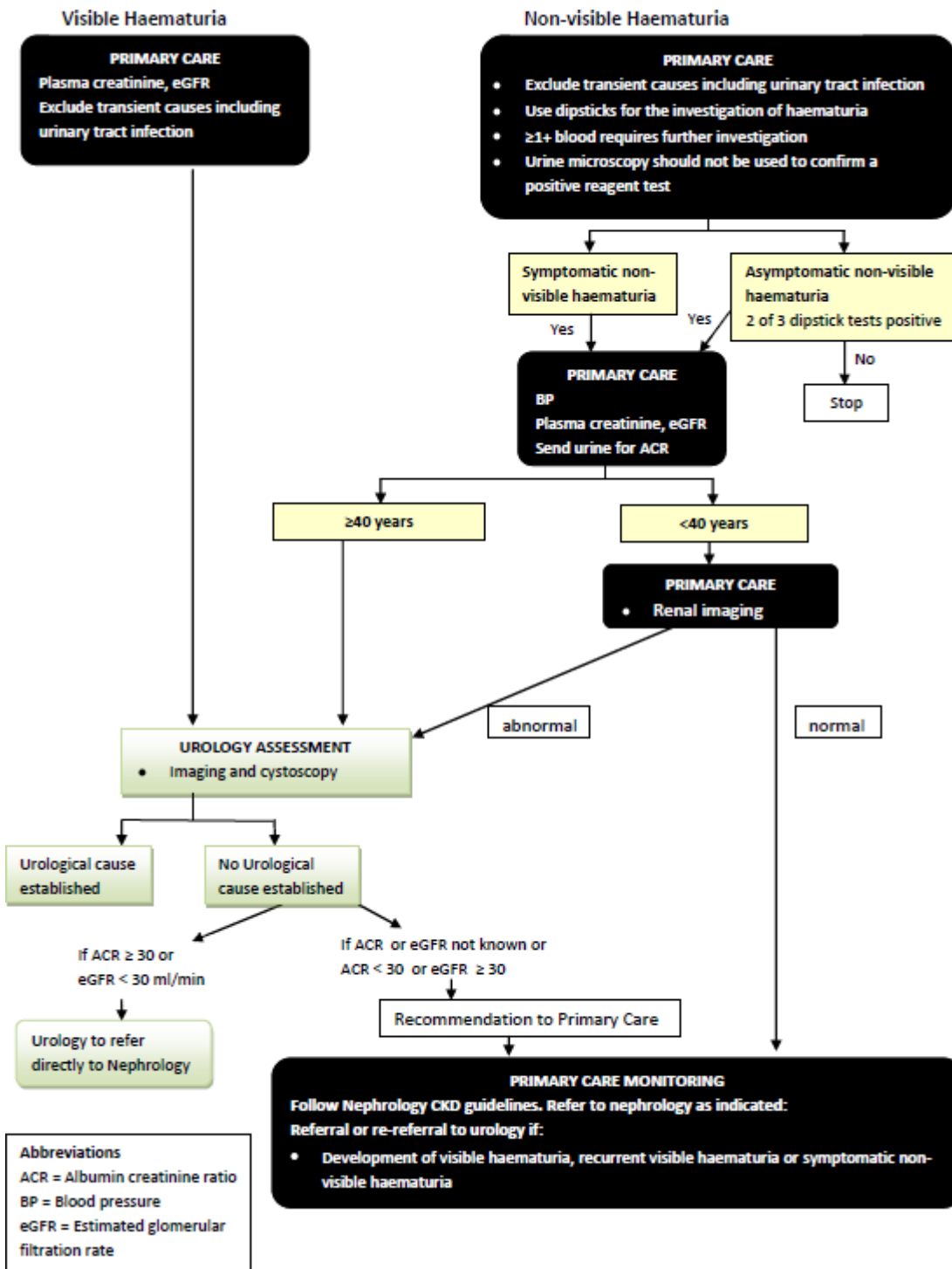
This guideline provides an overview of how to investigate and initiate management of patients with either visible or non-visible haematuria.

2. Scope

This guideline is relevant to all clinicians in both primary and secondary care settings.

3. Recommendations, Standards and Procedural Statements

The following flow chart summarises the approach to the investigation and management of patients presenting with haematuria:



4. Education and Training

No specific requirements

5. Monitoring and Audit Criteria

Key Performance Indicator	Method of Assessment	Frequency	Lead
Nil			

6. Legal Liability Guideline Statement

See section 6.4 of the UHL Policy for Policies for details of the Trust Legal Liability statement for Guidance documents

7. Supporting Documents and Key References

Nil

8. Key Words

Haematuria, blood in urine

This line signifies the end of the document

This table is used to track the development and approval and dissemination of the document and any changes made on revised / reviewed versions

DEVELOPMENT AND APPROVAL RECORD FOR THIS DOCUMENT			
Author / Lead Officer:	Peter Topham		Job Title: Consultant Nephrologist
Reviewed by:			
Approved by:			Date Approved:
REVIEW RECORD			
Date	Issue Number	Reviewed By	Description Of Changes (If Any)
Sept 2009	1	P Topham	Nil
July 2016	2	P Topham	Adapted to new template – no content changes
June 2019	3	P Topham	No content changes
July 2022	4	P Topham	No content changes
DISTRIBUTION RECORD:			
Date	Name	Dept	Received