

<b>To:</b>	<b>Trust Board</b>
<b>From:</b>	<b>John Adler, Chief Executive</b>
<b>Date:</b>	<b>30 May 2013</b>
<b>CQC regulation:</b>	<b>All Applicable</b>

**Trust Board Paper S**

<b>Title:</b>	<b>LLR Better Care Together Governance Structure</b>		
<b>Author/Responsible Director:</b> Chief Executive			
<b>Purpose of the Report:</b> To provide the Trust Board with a progress report on the development of the governance structure for the LLR Better Care Together Programme.			
<b>The Report is provided to the Board for:</b>			
	Decision	<input type="checkbox"/>	
	Discussion	<input checked="" type="checkbox"/>	
	Assurance	<input checked="" type="checkbox"/>	
	Endorsement	<input type="checkbox"/>	
<b>Summary / Key Points:</b>			
Further to Minute 112/13/3 of the 25 April 2013 Trust Board meeting, the Chief Executive to present this report.			
<b>Recommendations:</b>			
The Trust Board is invited to receive and note the report.			
<b>Strategic Risk Register</b>		<b>Performance KPIs year to date</b>	
N/A		N/A	
<b>Resource Implications (eg Financial, HR)</b>			
N/A			
<b>Assurance Implications</b>			
The report will assure the Trust Board on the governance structure for the LLR Better Care Together programme.			
<b>Patient and Public Involvement (PPI) Implications</b>			
N/A			
<b>Equality Impact</b>			
N/A			
<b>Information exempt from Disclosure</b>			
N/A			
<b>Requirement for further review ?</b> Monthly report to each Trust Board meeting.			

# Delivering Change – Better Care Together

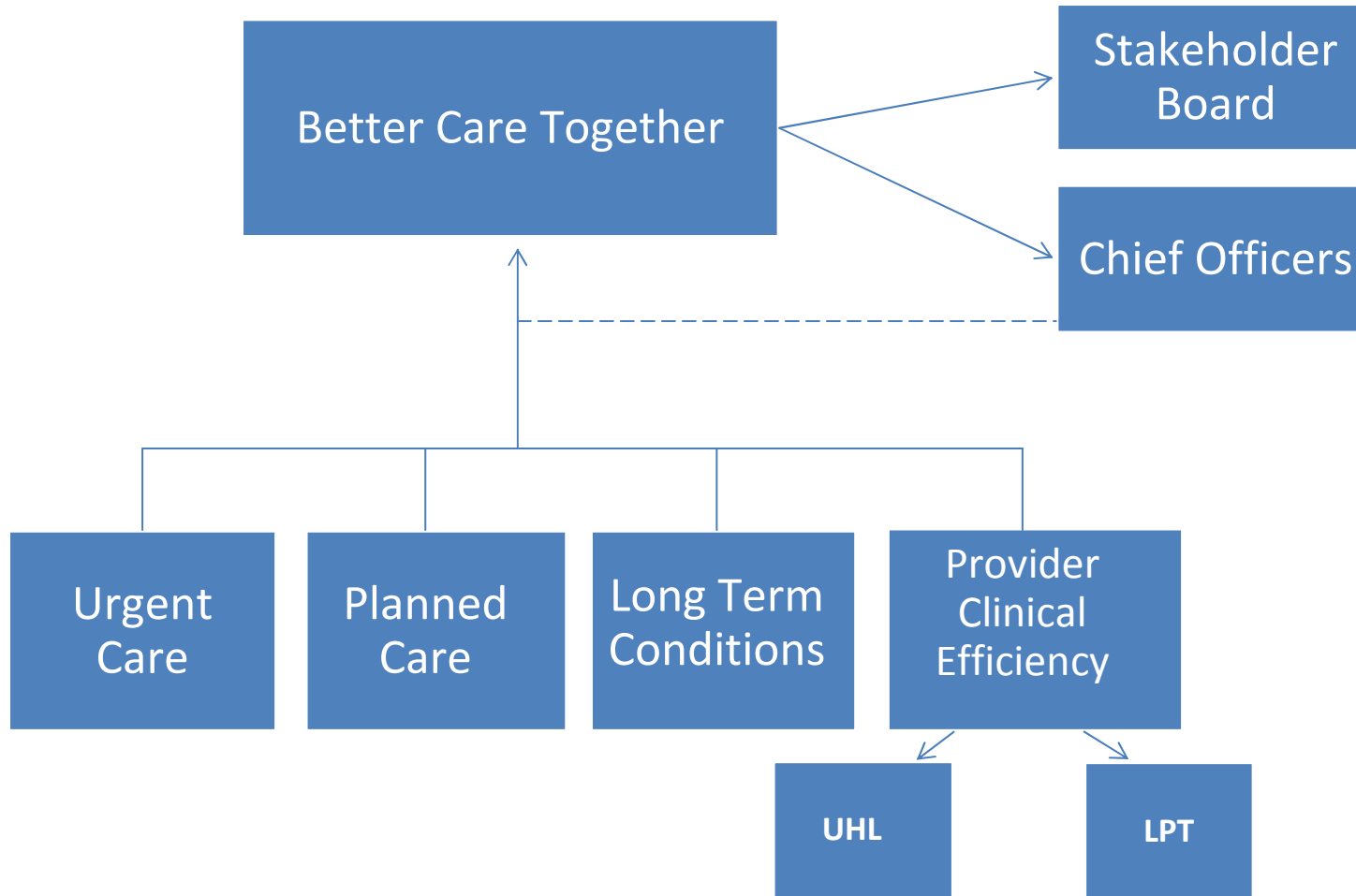
23<sup>rd</sup> May 2013



Better care **together**

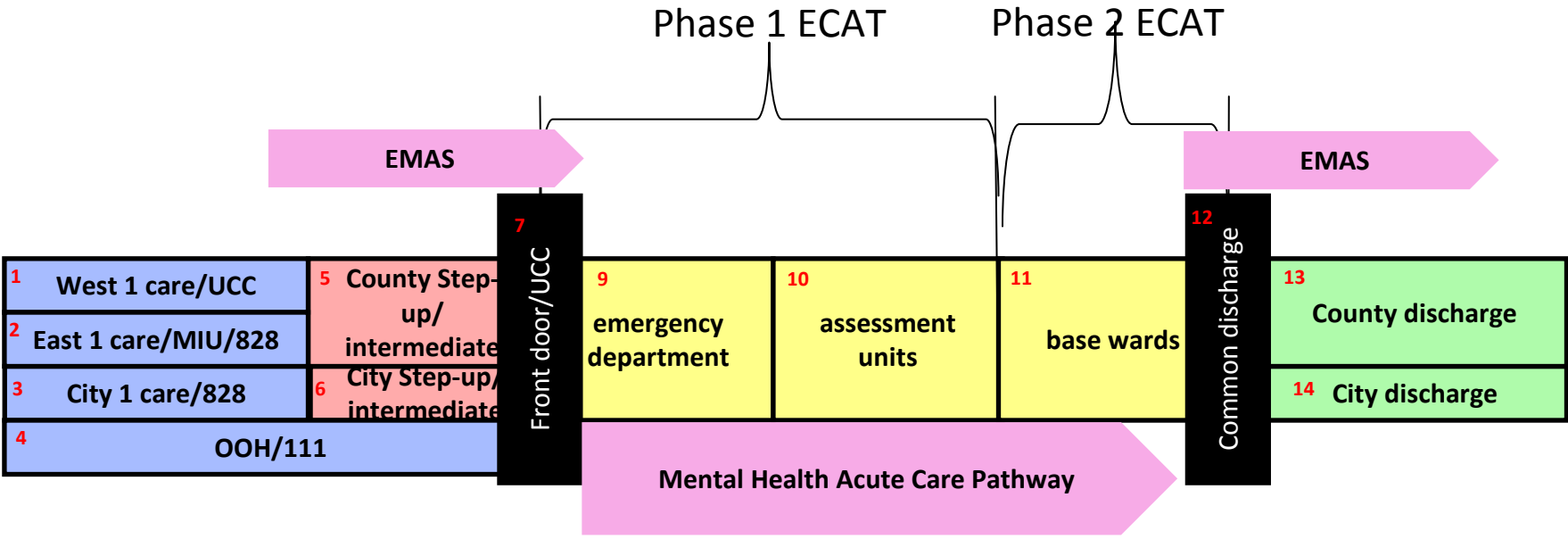


# Better Care Together Delivery



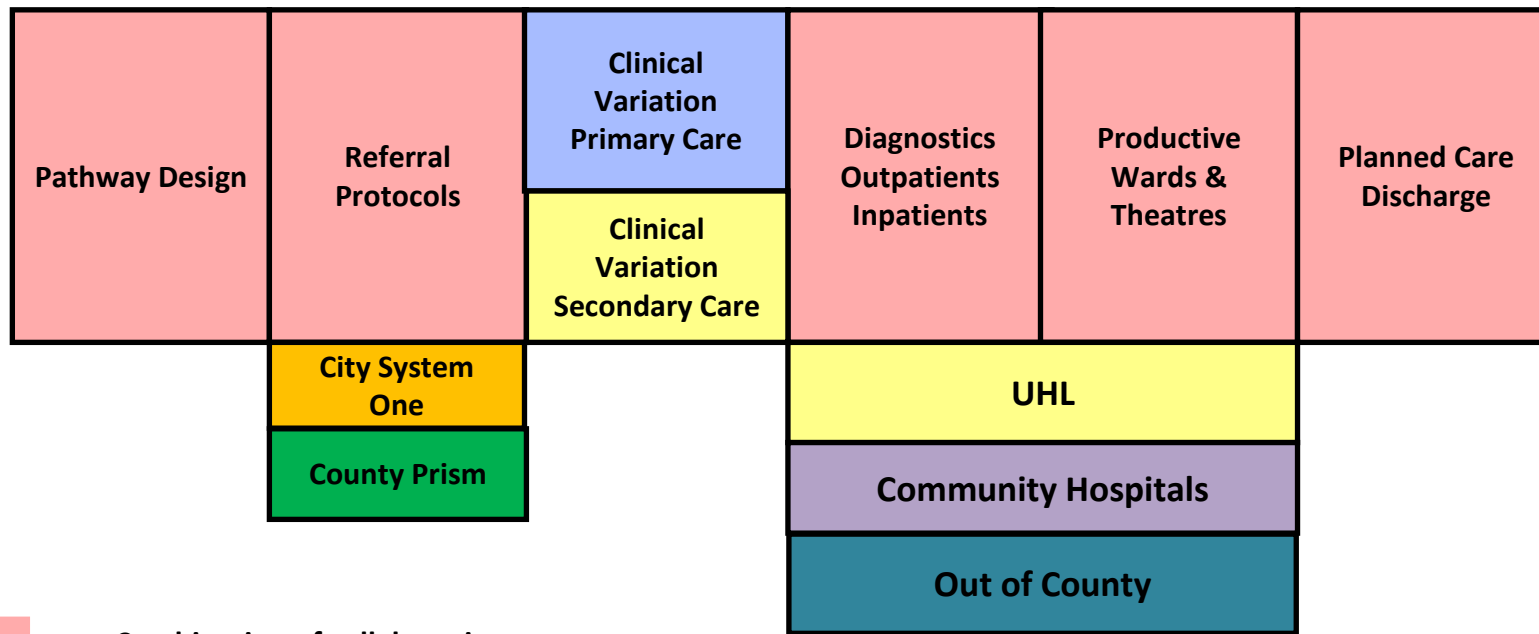
# URGENT CARE

## EUCON



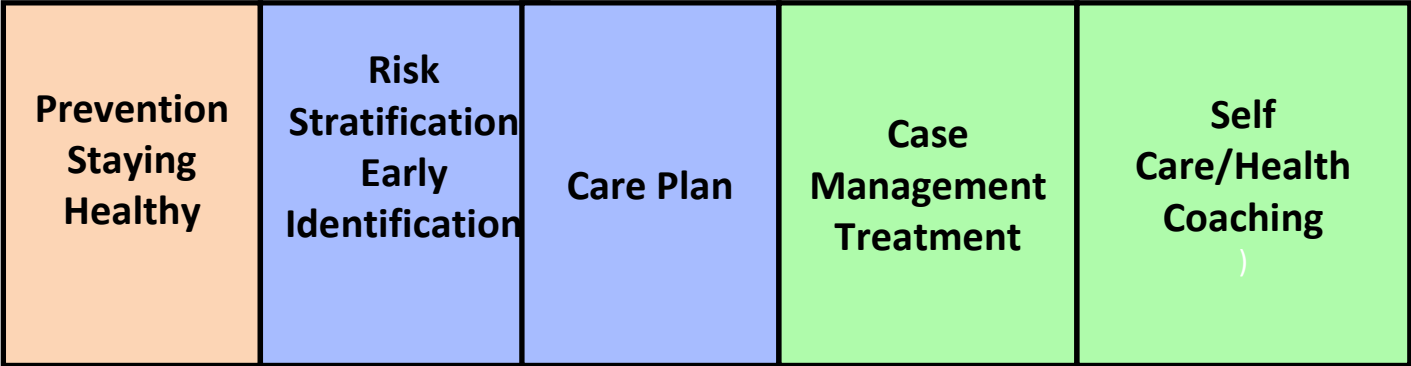
- = CCG x 3
- = Combination of collaborations
- = UHL
- = 3 CCGs plus UHL
- = CCGs plus LPT/Social Care



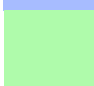
# PLANNED CARE



- = Combination of collaborations
- = CCG x 3
- = City CCG
- = East Leicestershire & Rutland CCG & West Leicestershire CCG
- = DCHS & East Leicestershire & Rutland & West Leicestershire CCGs
- = CCG Out of County Providers

# LONG TERM CONDITIONS



-  = Local Authority
-  = CCG x 3
-  = CCGs plus LPT/Social Care